

285

Lafayette Street, 5E

\$7,100,000

Bedrooms: 2

Bathrooms: 2

Square Footage (Approx.): 2660

Listing Type: Condominium

CCs: \$3,100

RE Taxes: \$2,772



Overlooking bucolic old St. Patrick's Cathedral, every inch of this spectacular loft apartment has been constructed with a singular obsessive vision – the absolute best quality possible. A collaborative vision by Neil Logan Architects & DHE Co., featuring the finest of materials and attention to detail. From the massive 15-foot planks of Dinesen GrandOak Danish floorboards and premium Reilly mahogany frame windows, to a solid Dinesen Oak 1200 bottle wine cellar and a custom carved solid marble bathtub, this home is built with grand scale and substance. The apartment also features loads of solid oak cabinetry, locking jewelry and watch drawers, totally soundproof construction for silent relaxation, Savant Home Automation with Lutron shades and true central air conditioning with humidification. Please contact us to request a full list of renovation details, too extensive to mention here.

FOR MORE INFORMATION PLEASE CONTACT

Jonathan Isaacs

T. 212-487-5052 | jon@isaacsganz.com

Steven Ganz

T. 212-487-5051 | steve@isaacsganz.com

285

Lafayette Street, 5E

\$7,100,000

Bedrooms: 2

Bathrooms: 2

Square Footage (Approx.): 2660

Listing Type: Condominium

CCs: \$3,100

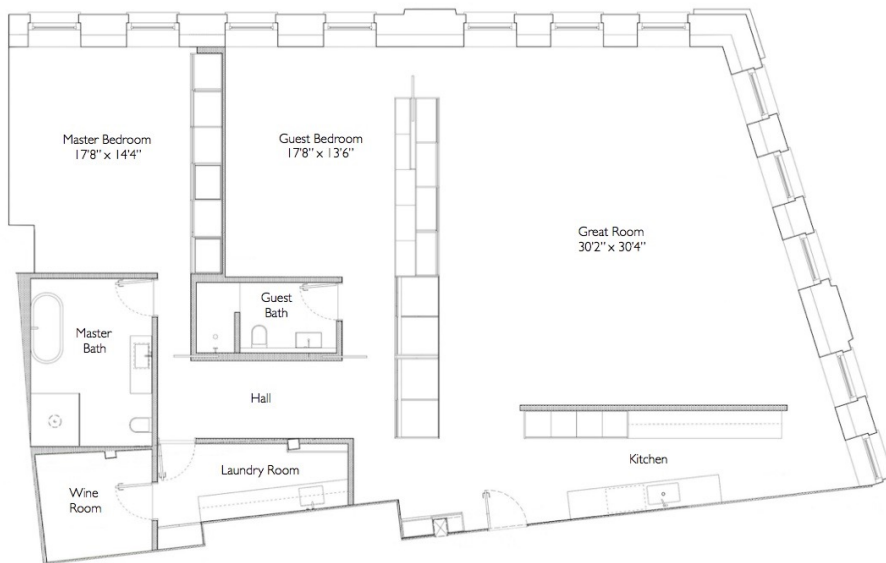
RE Taxes: \$2,772

RESIDENCE FEATURES:

1200 BOTTLE WINE ROOM
SAVANT HOME AUTOMATION
DINESEN GRAND WHITE OAK FLOORS
RADIANT HEAT FLOORS
LAUNDRY ROOM

BUILDING FEATURES:

LAUNDRY ROOM
DOORMAN
ELEVATOR
LAUNDRY IN BUILDING
PETS ALLOWED
STORAGE AVAILABLE



285

Lafayette Street, 5E

\$7,100,000

Bedrooms: 2

Bathrooms: 2

Square Footage (Approx.): 2660

Listing Type: Condominium

CCs: \$3,100

RE Taxes: \$2,772
