

205

EAST 16TH STREET,  
3E**\$1,250,000****Bedrooms:** 1**Bathrooms:** 1.5**Square Footage (Approx.):** 988**Listing Type:** Condominium**CCs:** \$968**RE Taxes:** \$1,477

A one-of-a-kind oasis in Manhattan, featuring detailed Stained Glass Windows, Soaring 18 ft. ceilings, and original Brick & Stone archways – it's hard to find such charm in a CONDO building. Possibilities are endless, with an oversized living area that feature two potential dining spaces and a renovated open kitchen. On the ground floor you'll also find an abundance of closets, additional powder room and built in office space. Upstairs there is an additional full bathroom, tons of closets, and a washer/dryer. The current owners opened up the upstairs to serve as a large master suite, but the installation of a door could turn the loft back into the two bedroom they had originally purchased as.

FOR MORE INFORMATION PLEASE CONTACT

**TRISH RIEDEL**

T. 917-664-2280 | Trish@isaacsganz.com

**KEREN ATZLAN**

T. 917-584-4925 | keren@isaacsganz.com

205

EAST 16TH STREET,  
3E

**\$1,250,000**

**Bedrooms:** 1

**Bathrooms:** 1.5

**Square Footage (Approx.):** 988

**Listing Type:** Condominium

**CCs:** \$968

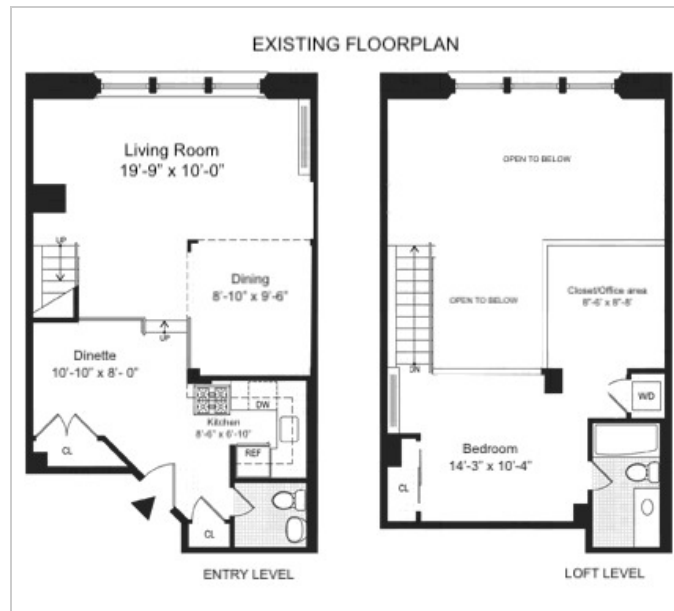
**RE Taxes:** \$1,477

**RESIDENCE FEATURES:**

STAINED GLASS WINDOWS  
18' CEILINGS  
BRICK & STONE ARCHWAY  
ORIGINAL DETAILS

**BUILDING FEATURES:**

1850's Church Conversion  
24hr DOORMAN  
LIVE-IN SUPER  
LOW MONTHLY COSTS



---

---

**205****EAST 16TH STREET,  
3E****\$1,250,000****Bedrooms:** 1**Bathrooms:** 1.5**Square Footage (Approx.):** 988**Listing Type:** Condominium**CCs:** \$968**RE Taxes:** \$1,477

---

---